

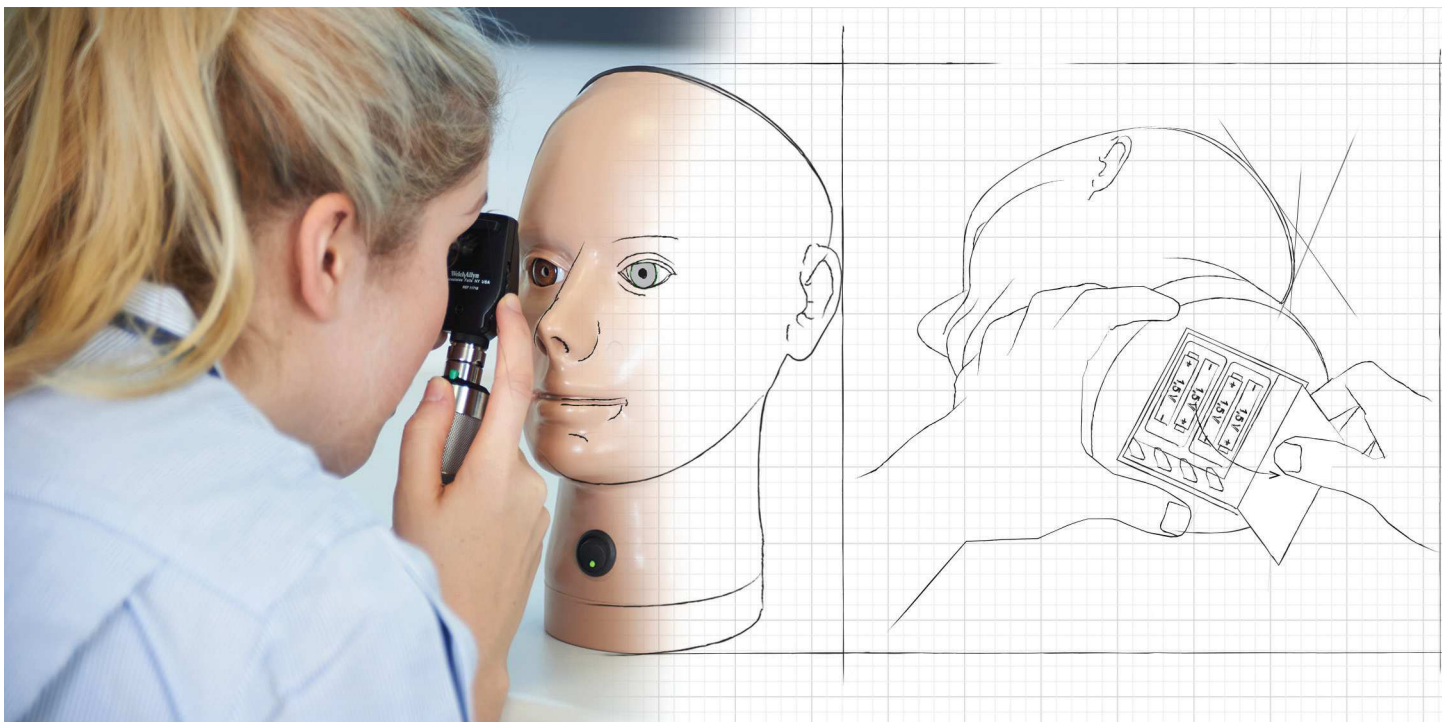
# Adam, Rouilly



PRODUCTS CATALOGUE 2016







## Quality, realism and durability, made in England

Since 1918, for **98 years** Adam,Rouilly has been supplying superior teaching models to medical education. Our 2016 products catalogue is a continuation of M.Rouilly's founding philosophy of providing **quality, realistic** and **durable** products.

All Adam,Rouilly products in this catalogue are **designed, tested** and **manufactured** with the upmost care at our purpose built facility in Sittingbourne, Kent, England.

Collaboration with medical experts ensures all of our products remain up to date with the latest in medical advancements, whilst continual investment in the latest materials and production techniques ensure realism and a long service life for each product.

We are delighted this year to launch **three new products**:

**AR90 CorMan®**- a highly flexible training aid for enteral feeding in adults

**AR403 Digital Eye Retinopathy Trainer** - augmenting eye examination training

**AR150 Stoma Care Torso** - our most realistic feeling stomas for clinicians and patient education



## 2 Year Guarantee

All products manufactured by Adam,Rouilly featured in this catalogue are covered by our full 2 Year Guarantee. This guarantee applies to models which have been used correctly and covers durability and functionality.



## 1918

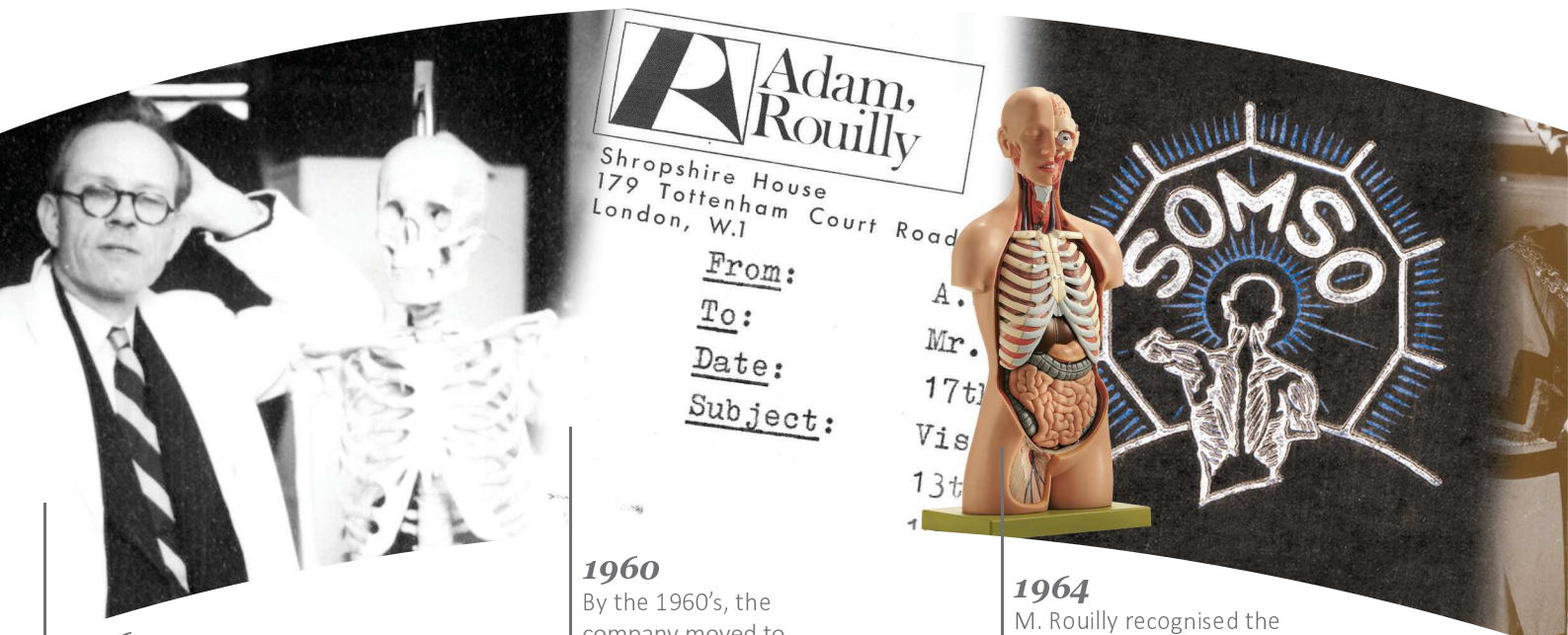
M. Guy Rouilly took over his father's architectural fittings company with a Mr Adam and changed the name to Adam, Rouilly.

## 1920

After finding a human skull and donating it to a local medical school, M. Rouilly was quick to realise there was a need for quality medical teaching material.

## 1922

From the 1920's, Adam, Rouilly supplied articulated skeletons to all the London Medical Schools and Teaching Hospitals. Staff were trained in the articulation of skeletons and these skilled workers were known as Osteologists.



## 1936

From his unique little shop at 18 Fitzroy Street, London, M. Rouilly would personally inspect every skeleton before it was dispatched.

## 1960

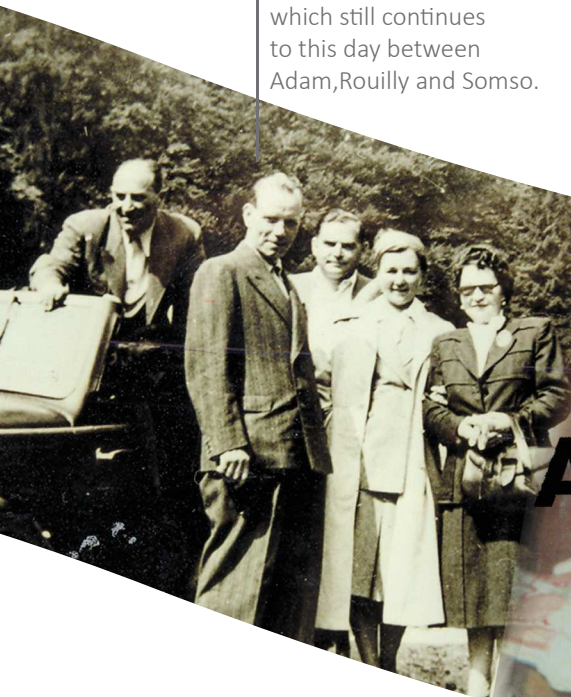
By the 1960's, the company moved to Shropshire House, 179 Tottenham Court Road, London. Doctors from all over the world studied in London and the name Adam, Rouilly became known worldwide.

## 1964

M. Rouilly recognised the superb quality of Somso models in 1927 and today these are the only Anatomical Models that Adam, Rouilly supplies.

**1927**

In 1927, Guy Rouilly met Marcus Sommer. The close co-operation between the two formed the basis of an enduring personal relationship which still continues to this day between Adam, Rouilly and Somso.



**1930**

M. Rouilly established long term relationships with companies throughout the world as the range of products offered by Adam, Rouilly expanded.



**1931**

In 1931, M. Rouilly introduced the Bedford Hospital Demonstration Doll developed in co-operation with Miss Bedford, nurse tutor at one of the London Nursing Schools.



SOLE MAKERS AND AGENTS FOR THE "BEDFORD" HOSPITAL DOLL.

**1972**

Management changes took place in the mid 1960's and the company also expanded both its operational and marketing activities - with many famous faces visiting exhibition stands. Manufacturing relocated to Sittingbourne.



**1980**

The highly successful Infusion Arm Trainer was initially produced for military training, where durability and realism were the principal requirements.

**1990-2000**

Expansion continued and the company moved into a modern, purpose built manufacturing, sales and distribution facility in Sittingbourne, Kent.

**2016**

Today's product range is still designed to reflect M. Rouilly's early philosophy. The launch of products such as Desperate Debra® affirm our commitment to realism, quality and durability.





<b>NEW</b>	<b>AR90 CorMan® - Adult Nasogastric/Nasojejunal Feeding Trainer</b>	8 - 9
	<b>AR331 The Hungry Manikin® - Nasogastric Feeding Trainer</b>	10 - 11
	<b>AR361 Rhinoplasty Skills Trainer</b>	12 - 13
	<b>AR305 Nose Bleed/Epistaxis Trainer</b>	14
	<b>AR301 Ear Syringing Trainer</b>	15
<b>NEW</b>	<b>AR403 Digital Eye Examination/Retinopathy Trainer</b>	16 - 17
	<b>AR302 Ear Diagnostic Trainer</b>	18 - 19
	<b>AR251 Injection, Cannulation, Venepuncture &amp; Infusion Arm</b>	20 - 21
	<b>AR321 Rectal Examination Model</b>	22
	<b>AR341 Suprapubic Catheterisation Model</b>	23
<b>NEW</b>	<b>AR150 Stoma Care Torso</b>	24 - 25
	<b>AR58 Desperate Debra® - Impacted Fetal Head Simulator</b>	26 - 28
	<b>AR312 Episiotomy Suturing/Perineal Repair Trainer</b>	29
	<b>Obstetric Phantom, Fetal Dolls and Female Pelvis</b>	30 - 34
	<b>Bedford Nurse Training Dolls</b>	35 - 41
	<b>AR10A X-Ray/Radiographic Positioning Doll</b>	42 - 43
<b>IMPROVED</b>	<b>AR351 Nerve Block/Pain Relief Manikin</b>	44 - 45

NEW





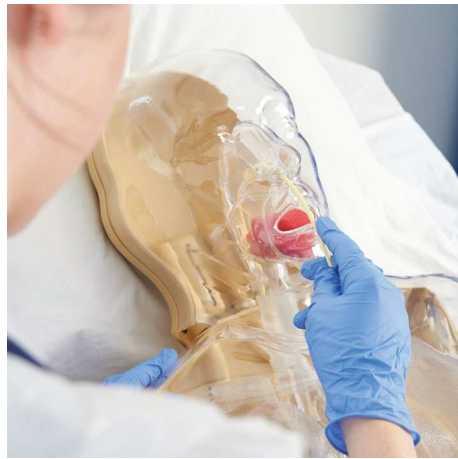
## Skills

- Measurement, placement and securement of nasogastric and nasojejunal tubes
- Insertion of gastrostomy device
- Tube misplacement into left or right lung
- Measuring pH (acidity/alkalinity) of stomach aspirate
- Enteral feeding via nasogastric, nasojejunal or gastrostomy devices
- Administration of liquid based medicines

## Includes

- Nasogastric tube Size 10 Fr, 92 cm length
- Silicone lubricant
- Instruction manual
- Rigid carrying case with wheels

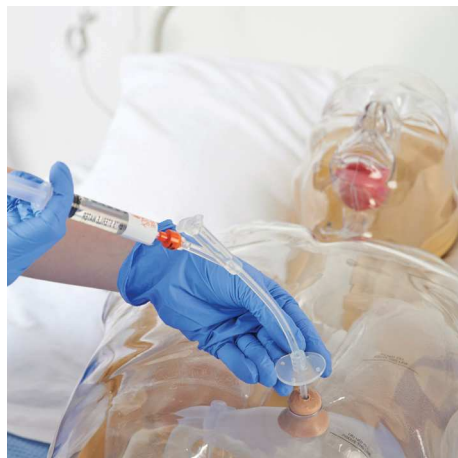
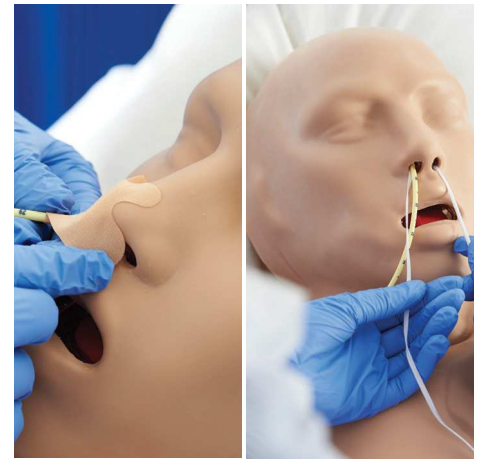
*Size 10 Fr Nasogastric, Size 12 Fr Ryles and Size 16 Fr Gastrostomy devices should be used with this model*



Insertion of nasogastric/nasojejunal tubes



Nasogastric procedures (shown with skin in place)



Gastrostomy device placement



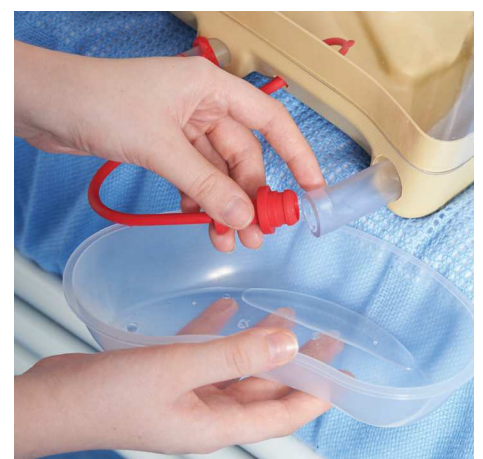
Fully compatible with CORPAK's CORTRAK® Enteral Access System



Rigid carrying case with wheels



Setting of tube diversion



Easy drainage



## AR331 THE HUNGRY MANIKIN® - PAEDIATRIC NASOGASTRIC FEEDING TRAINER



This model was designed by nutrition nurses at Birmingham Children's Hospital to demonstrate to parents/carers the technique for inserting nasogastric and gastrostomy tubes in children.

The Hungry Manikin® has been significantly improved so that fluids can be introduced into the stomach. The transparent cover is now removable and, by means of a simple connector, the stomach can be removed for cleaning.

This simple to use simulator helps identify the stages of placement, ensuring that the nasogastric device is passed safely and correctly.

This manikin enables parents/carers to visualise the correct positioning of nasogastric and gastrostomy tubes and also practise the associated techniques.

Families have reported that The Hungry Manikin® gave them invaluable practice and increased their confidence and understanding.



AR331 The Hungry Manikin®

### Skills

- Measurement, placement and securement of nasogastric tube
- Insertion of gastrostomy tube
- As the manikin accepts fluids, training in the following procedures is now possible:
  - Aspiration of the stomach for confirming correct tube placement
  - Measuring pH (acidity/alkalinity) of stomach aspirate
  - Enteral feeding via nasogastric or gastrostomy tubes
  - Administration of liquid based medicines

### Features



## Includes

- Nasogastric tube Size 6 Fr, 56 cm length
- Instruction manual
- Rigid carrying case

*Size 6 Fr or size 8 Fr Nasogastric and up to Size 12 Fg Ryles tubes should be used with this model*



*Movement of epiglottis*



*Aspiration of stomach*



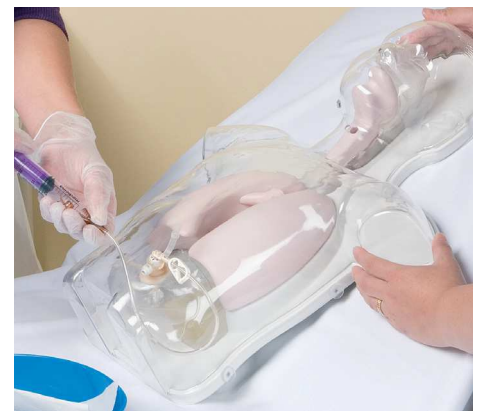
*Securing nasogastric tape*



*Bolus feeding*

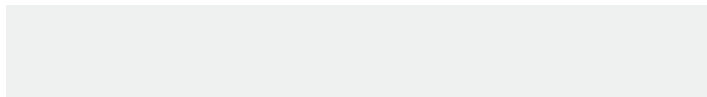
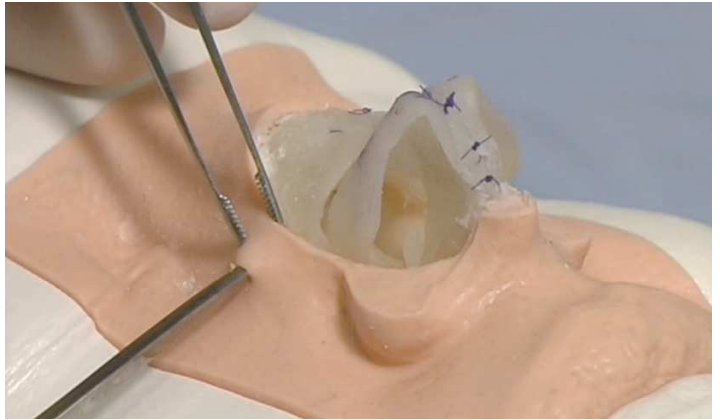
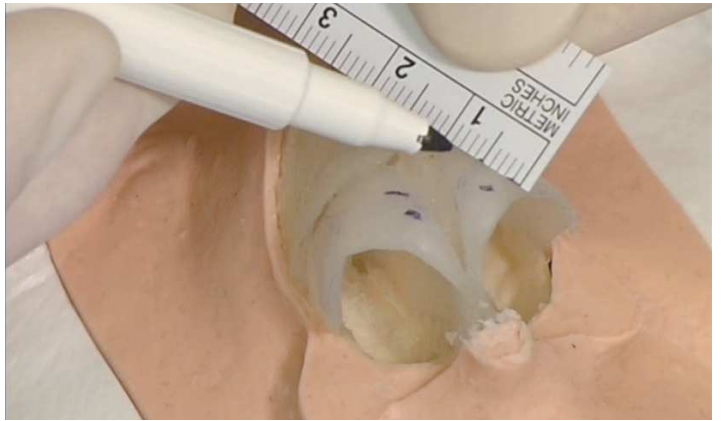


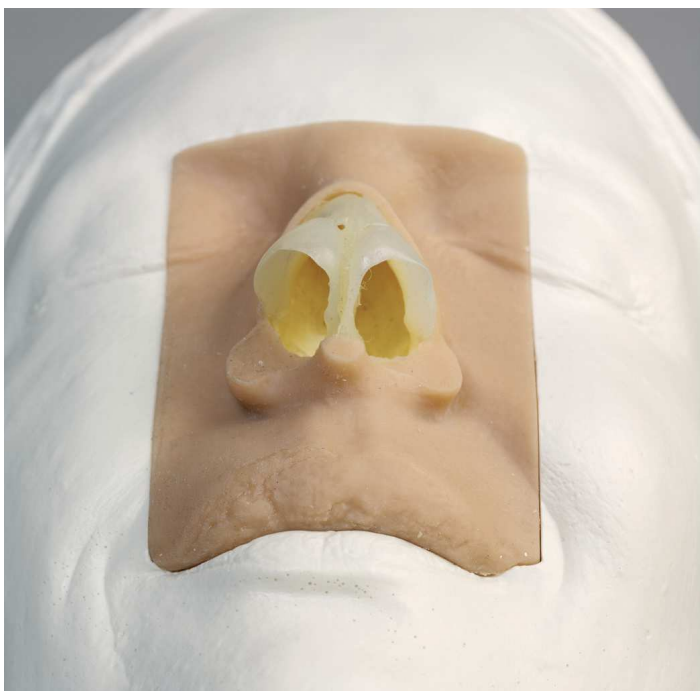
*Inflating gastrostomy tube*



*Administering via gastrostomy*

Adam,Rouilly supports DEMELZA – Hospice Care for Children





## AR305 NOSE BLEED/EPISTAXIS TRAINER

Developed in conjunction with the ENT Department of Addenbrooke's Hospital, Cambridge

### Skills

- This interactive model provides a practical test of skill for all those who are required to manage severe nose bleeding/epistaxis
- Strongly recommended for all ENT and Casualty departments
- For training in cauterisation and nose packing
- Success of cauterisation, at four sites on septum, identified by light panel (battery included)
- The trainee must identify the bleeding point, clear it by suction and deal with it either by nasal packing or cauterisation





NEW

AR403 DIGITAL EYE EXAMINATION/RETINOPATHY TRAINER, WHITE

AR403-B DIGITAL EYE EXAMINATION/RETINOPATHY TRAINER, BLACK



Adam,Rouilly's already successful AR303 Eye Retinopathy Trainer has been completely redesigned to use the latest in **high resolution digital screen technology** - enhancing realism and the training experience.

Our new AR403 Digital Eye Retinopathy Trainer includes **36 diabetic, common and less common retinal conditions** to offer excellent 'hands-on' experience in examination of the eyes and the use of an ophthalmoscope.

### Features

-  Simple to set up and use
-  High resolution digital display
-  Easy to use, individual digital control for each eye
-  Examination cover to hide displays of condition numbers
-  Battery or worldwide mains power compatible
-  Sleep mode to conserve power



AR403 Digital Eye Examination/Retinopathy Trainer, White



**Conditions and Diseases of the Retina**

**Diabetic Retinopathy (According to National Screening Programmes England, Europe and WHO)**

1. Background Diabetic Retinopathy
2. Maculopathy
3. Pre-Proliferative Diabetic Retinopathy
4. Proliferative Diabetic Retinopathy
5. New Vessels Disc
6. Laser
7. Photocoagulation
8. Ungradable

**Important and Common Retinal Conditions**

9. Normal
10. Glaucoma
11. Papilloedema
12. Optic Atrophy
13. Age-related Macular Degeneration (Dry)
14. Hypertensive Retinopathy
15. Central Retinal Vein Occlusion
16. Central Retinal Artery Occlusion
17. Drusen
18. Retinitis Pigmentosa
19. Myelinated Nerve Fibres
20. High Myopia
21. Branch Retinal Vein Occlusion

**Important and Less Common Retinal Conditions**

22. Pre-Retinal Vein Occlusion
23. Multiple Retinal Haemorrhages
24. Retinal Detachment
25. Angioid Streaks
26. Benign Disc Neavus
27. Malignant Melanoma
28. Macular Hamorrhage
29. Choroidal Naevus
30. Macular Scar (Toxoplasma)
31. Cytomegalovirus Retinitis
32. Lipaemia Retinalis
33. Medusa Head
34. Myopic Crescent - Normal Choroidal Vessels
35. Sub Hyaloid Haemorrhage Resolving
36. Macular Burn

**Includes**

- Instruction manual describing details of each condition
- Low voltage mains adaptor with worldwide plug fixings
- Rigid carrying case



Simple digital control for both left and right eyes



Cover to hide condition LED indicators during examination conditions



Worldwide mains power

Battery Power (batteries not included)



AR302 Ear Diagnostic Trainer, White



AR302-B Ear Diagnostic Trainer, Black



## Skills

Of interest to all those concerned with ear examinations.

The ear drum appearances presented represent a range of common disorders seen on examination of patients with symptoms of middle ear problems.

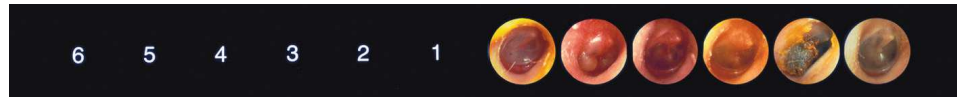
The ear model is designed to be used with an otoscope.

## Features

-  Anatomically correct, with twelve ear conditions presented in the form of endoscopic photographs of the tympanic membrane mounted on a slide
-  Simple to set up and use

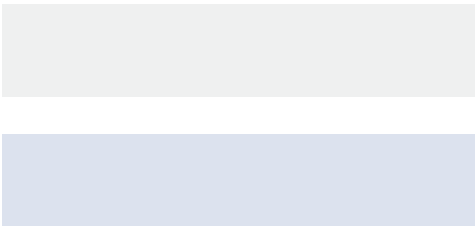
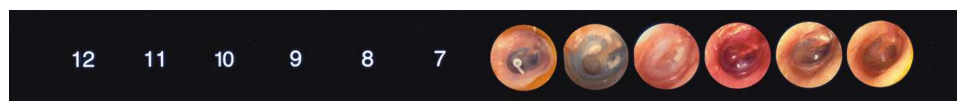
Conditions

- Normal tympanic membrane
- Acute otitis media
- Acute otitis media – no landmarks
- Resolution of middle ear effusion
- Tympanosclerosis
- Tympanostomy tube-grommet
- Cerumen of wax
- Acute middle ear infection
- Serous otitis media
- Fluid behind the drum
- Further example of serous otitis
- Perforation of the ear-drum



Includes

- Instruction manual describing full details of each ear condition
- Double sided photographic slide showing conditions



**BEST  
SELLER**

**AR251 INJECTION, VENEPUNCTURE, CANNULATION & INFUSION ARM, WHITE**  
**AR251-B INJECTION, VENEPUNCTURE, CANNULATION & INFUSION ARM, BLACK**



### Skills

- Intravenous cannulation - on the back of the hand or forearm
- Setting up and monitoring infusions including application of adhesive dressings to secure cannula in place
- Withdrawal of blood using syringe or vacutainer

### Features



Easy to set up, operate and maintain



Continuous, closed vein system is clean to use. An innovative two bottle sealed blood assembly with automatic pressure release valve greatly reduces the risk of leakage



A realistic sensation is felt when the skin and vein are penetrated. Lifelike blood 'flashback' confirms correct needle location in the vein and blood can then be withdrawn



Flexible wrist for improved realism



The skin is moulded from a specially selected grade of silicone to improve feel and durability. Palpation of veins and identification of working and 'blind veins' is also possible.



The material used for the veins, and the silicone skin have self sealing characteristics that can be penetrated many times, enhancing durability



Many procedures can be carried out before a replacement skin is required. Replacement skins and veins are simple to fit



*AR251-B Infusion Arm, Black*

## Accessible veins

- Cephalic
- Basilic
- Median Cubital
- Dorsal metacarpal

## Minimising spillage and staining

- The innovative sealed blood assembly reduces the risk of spillage as fluids can easily be pumped from one bottle to the other
- Special blanking plugs for the bottles are provided when transporting the arm

## Includes

- Arm
- Arm rest
- Blood bottle assembly (2)
- Blanking plugs for transportation (2)
- **AR204** Blood concentrate to make up 2.5 litres artificial blood
- Lubricant
- Instruction manual
- Rigid carrying bag for easy storage



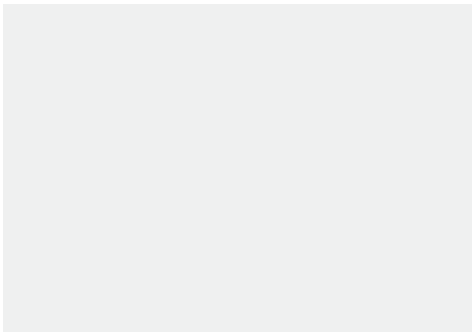
Simple set up



Unique pressurised blood system



Vein palpation



## Repair Service

The AR251 and AR251-B can be re-skinned and re-veined. This is a relatively simple procedure for customers to undertake. However, if you prefer we can carry out this service for you.

Please contact a member of our Sales Department for further information on this service.



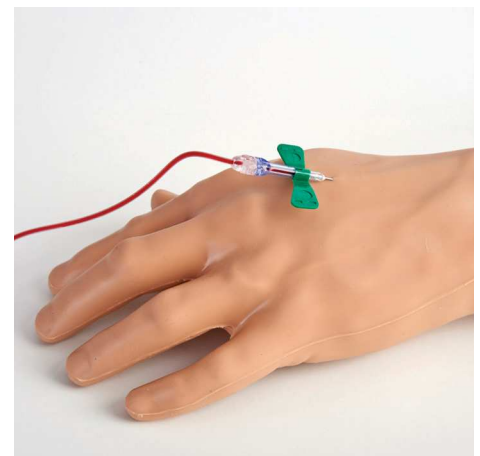
Realistic flashback



Vacutainer blood withdrawal



Cannula insertion. Adhesive dressing application



Cannula insertion in the back of the hand

# Rectal Examination

## AR321 RECTAL EXAMINATION MODEL, WHITE

## AR321-B RECTAL EXAMINATION MODEL, BLACK

- Nurses, both in hospital and community settings, are expected to provide help and advice to a wide range of patients whom at some time during their care experience difficulties with normal bowel function.

### Skills

- This model has been developed for nurses performing rectal examination to assess the amount and consistency of stools in the rectum
- Model is designed to be placed on its left side for examination in the left lateral position
- Administering solid rectal medication

*This model is not suitable for liquid medication*



AR321 Rectal Examination Model, White



AR321-B Rectal Examination Model, Black



### Includes

- SPAR321/A SET OF 9 STOOLS
- SPAR321/B ANAL SPHINCTER CONDITIONS (SET OF 13 PHOTOGRAPHS IN FOLDER)
- SPAR321/C ANUS AND ANAL CANAL
- SPAR321/D KY JELLY
- Instruction manual
- Rigid carrying case

## AR341 SUPRAPUBIC CATHETERISATION MODEL, WHITE AR341-B SUPRAPUBIC CATHETERISATION MODEL, BLACK

Suprapubic catheterisation is becoming an increasingly common alternative to urethral indwelling catheters, and can be undertaken by practitioners and nurses in many healthcare settings. Training away from the patient is essential to ensure that practitioners feel confident and competent to carry out the procedure.

### Skills

- The suprapubic catheterisation model allows the practitioner to feel the normal pressures exerted by the abdominal wall on catheterisation
- Allows the practitioner to understand the average length of catheter required to be inserted in order to drain the bladder

### Features

Simple to set up and use

When the bladder is successfully reached water will flow through the catheter

### Includes

- Lower torso on a base
- Plastic container with lid and fittings
- Pressure bulb with tubing and connectors
- Size 16 Foley Catheter
- Instruction manual
- Rigid carrying case



*AR341 Suprapubic Catheterisation Model, White*



*AR341-B Suprapubic Catheterisation Model, Black*

NEW

AR150 STOMA CARE TORSO, WHITE  
AR150-B STOMA CARE TORSO, BLACK



Adam,Rouilly's highly popular Stoma Care Torso has been improved to be larger and closer in size to an adult. Our continuing investment in the latest materials and production techniques has allowed us to create our most realistic stomas - both in look and feel.

### Skills

- The Stoma Care Torso is designed to train healthcare professionals involved in caring for patients with a colostomy, ileostomy or urostomy
- An invaluable tool also for patient self-training

### Features



Simple to set up and use



Supplied with five different types of stoma which are easily interchangeable:

- Ileostomy
- Loop Ileostomy
- Urostomy (with stents)
- Colostomy
- Loop Colostomy (with removable bridge)



Compatible with most barrier creams and films



Dressings and plasters can be applied to the torso repeatedly



AR150 Stoma Care Torso, White

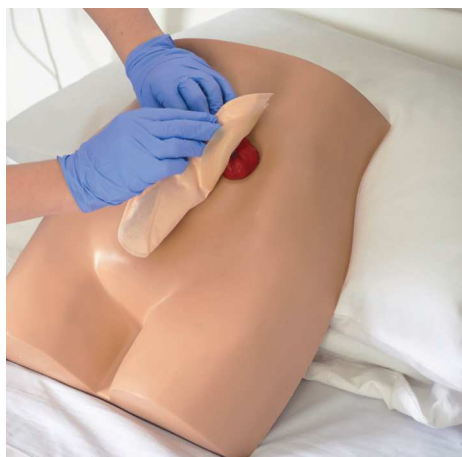


**Includes**

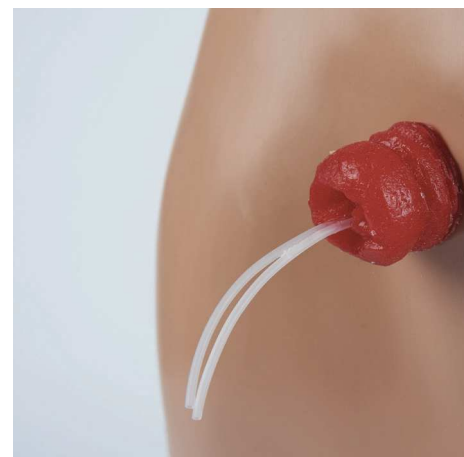
- Instruction manual
- Soft carrying case



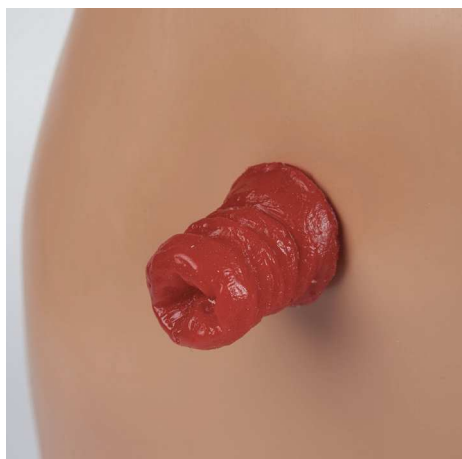
*Barrier cream application*



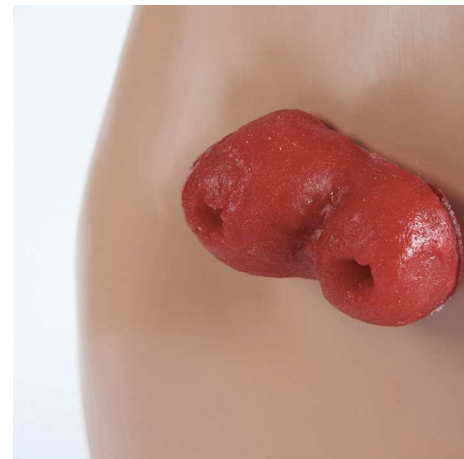
*Adhesive dressing compatible*



*Urostomy*



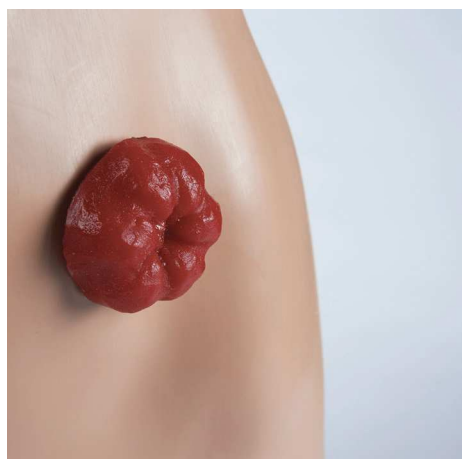
*Ileostomy*



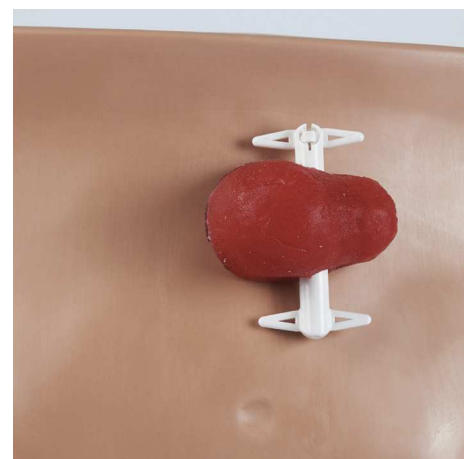
*Loop Ileostomy*



*Soft Carrying Bag*



*Colostomy*



*Loop colostomy with removable bridge*

### NEW AR58 DESPERATE DEBRA® - IMPACTED FETAL HEAD SIMULATOR



Developed in collaboration with Dr Graham Tydeman, Consultant in Obstetrics and Gynaecology - NHS Fife, Professor Andy Shennan - Professor of Obstetrics, and Annette Briley – Consultant Midwife, Clinical Trial Manager, Maternal and Fetal Research Unit, Guy's and St Thomas' Hospital, the Desperate Debra® simulator has been designed to facilitate the training and implementation of correct clinical procedures when confronted with impaction of the fetal head - a serious and potentially life threatening event.

Obstetrics has taken the lead in reducing the number of perinatal and neonatal complications by developing emergency drills for major events such as shoulder dystocia and breech delivery using simulators. Until now, however, no simulator has previously been available for training in dealing with an impacted fetal head.








AR58 Desperate Debra®

#### Skills

- The Desperate Debra® model simulates the abdomen, uterus and fetus of a birthing mother with a mechanism to replicate an impacted fetal head.
- Vaginal examination in advanced labour
- Identification of fetal head position with palpable fontanelles, variable degrees of flexion and asynclitism
- Successful delivery of an impacted fetal head at caesarean section with adjustable degrees of difficulty

#### Features

-  Easy to set up, operate and maintain
-  Highly realistic vaginal examination and fetal head extraction
-  Palpable fontanelles in fetal head
-  Variable degrees of difficulty/fetal head impaction
-  Adjustable fetal head flexion and asynclitism

## Improving Training, Reducing Morbidity

- Since the 1950's, various techniques and devices have been described to overcome impaction of the fetal head but none have been adopted into routine practice.
- The Desperate Debra® simulator will allow for the development of emergency procedures, increase awareness and refine practices for current professionals as well as introducing the issue and ensuring confidence amongst trainees.

## 70% Experience Rate

- 70% of surgeons in a survey group have had personal experience of difficulty in delivering an impacted fetal head at caesarean section.
- 80% of those in the survey group had encountered serious maternal or fetal/neonatal morbidities associated with difficulties in delivery of an impacted head.

## 20,000 Birth Per Year Potential

- Many obstetricians first encounter impaction of the fetal head while in training, often at night without immediate access to senior help.
- There are currently no figures for the exact incidence rate, but with around 200,000 caesarean sections in the UK each year with about 10% at full dilation, there is a potential for it to affect around 20,000 births per year.



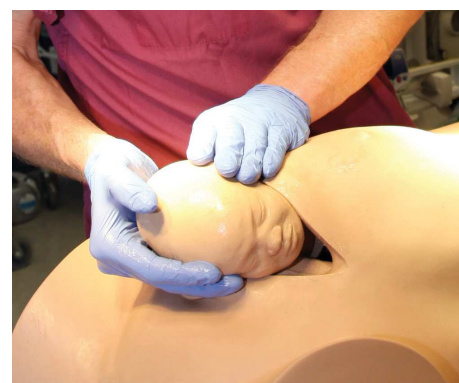
Vaginal examination



Gaining access below the head



Disimpacting the head from the pelvis



Successful delivery of fetal head



Fetal head position indicators



Impaction difficulty adjustment

Guy's and St Thomas'   
NHS Foundation Trust

  
Fife

  
Registered charity no 1060508

Features in the **Royal College of Obstetricians & Gynaecologists Operative Birth Simulation Training Course (ROBuST)**

# Impacted Fetal Head

## Increasing Incidences

- NICE states that women diagnosed with failure to progress in the first stage of labour should receive intravenous syntocinon prior to a decision to deliver by caesarean section.
- This means that increasingly, women who fail to deliver vaginally are undergoing caesarean section in the late first and second stage of labour, when difficulty in delivering the impacted fetal head is most commonly reported.
- Average maternal Body Mass Index (BMI) is also increasing. Pregnant women with high BMIs are more likely to have labour induced or augmented, an increased rate of caesarean section in the late first and second stage of labour and the intrapartum complications with impaction of the fetal head.

## Includes

- Desperate Debra® simulator mounted on base with straps
- Lubricant
- Instruction Manual
- Product DVD
- Carrying case with wheels for easy transportation



## **NEW** AR312 EPISIOTOMY SUTURING/PERINEAL REPAIR TRAINER

### Skills

- Repair of a right mediolateral incision
- Handling and knot tying

### Features



Accurate, life size anatomy with all relevant landmarks



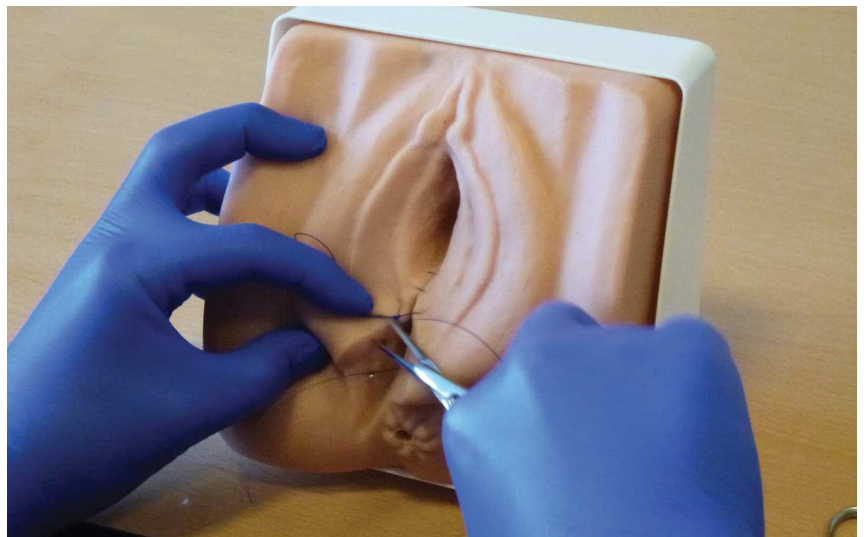
Improved material gives highly realistic feedback during suturing



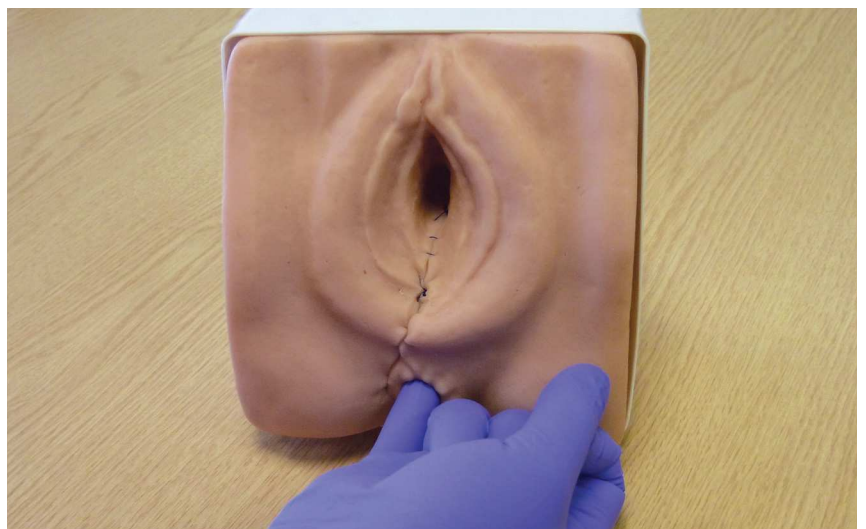
Suited to deep muscle, subcutaneous and superficial suturing techniques



Suction feet for easy, stable securement to work surface



*Suited to a range of suturing techniques*



*Digital rectal examination to verify bowel has not been stitched*



## AR50S OBSTETRIC PHANTOM WITH FETAL DOLL AR50S-B OBSTETRIC PHANTOM WITH FETAL DOLL, BLACK

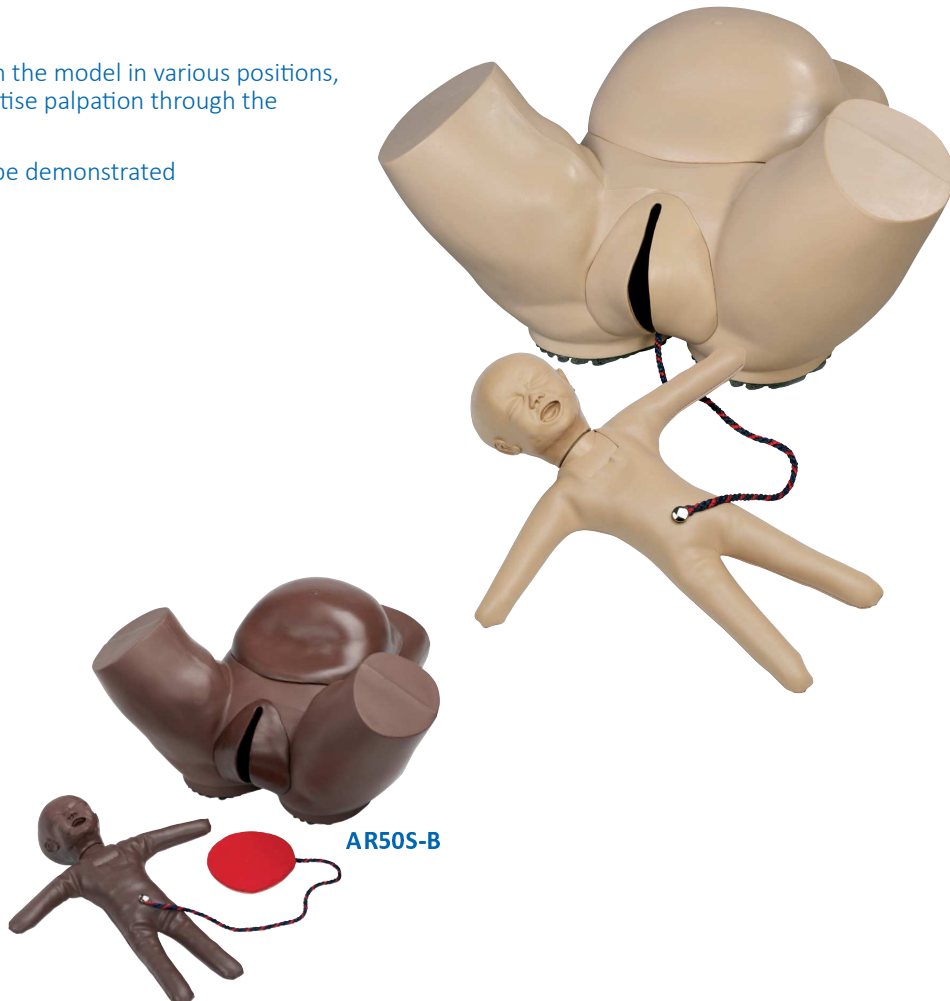


Obstetric Phantom used as part of the Liverpool School of Tropical Medicine Making it Happen (MiH) Programme, which aims to reduce maternal and newborn mortality ([www.mnhu.org](http://www.mnhu.org)). Shown here in use in Pakistan. Image courtesy of Kristian Godfrey.

### Skills

- The fetal doll can be placed in the model in various positions, to enable the student to practise palpation through the abdominal wall
- Different birth positions can be demonstrated
- Includes fetal doll AR75

### Features



**FETAL DOLLS**

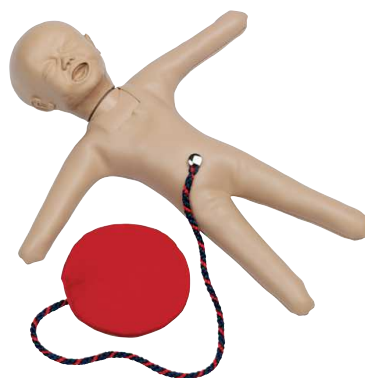
Our range of fetal dolls available with a variety of features may be used on their own or with **AR50S/AR50S-B OBSTETRIC PHANTOM** as well as the **AR35 PLASTIC FEMALE PELVIS**

**AR75 FETAL DOLL**

**AR75-B FETAL DOLL, BLACK**

**Features**

- Unique head joint allows head to flex and rotate
- PVC body
- Detachable cord and placenta
- Representation of fontanelle



AR75



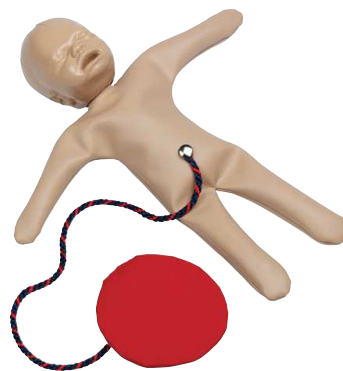
AR75-B

**AR74 FETAL DOLL**

**AR74-B FETAL DOLL, BLACK**

**Features**

- PVC head and body for greater flexibility
- Detachable cord and placenta
- Representation of fontanelle
- Weighted for greater flexibility and realism



AR74



AR74-B

**AR51 FETAL DOLL**

**AR51-B FETAL DOLL, BLACK**

**Features**

- PVC head
- Flexible suedette body
- Detachable cord and placenta
- Representation of fontanelle



AR51



AR51-B



## AR57 OBSTETRIC PHANTOM SET AR57-B OBSTETRIC PHANTOM SET, BLACK



### Skills

- Our most popular set for delivery practice
- The fetal doll can be placed in the model in various positions, to enable the student to practise palpation through the abdominal wall
- Different birth positions can be demonstrated

### Features



Based on a female pelvis, this life size model features all the relevant landmarks



Highly durable



AR57



**Includes**

- AR50S/AR50S-B OBSTETRIC PHANTOM (see page 22)
- AR75/AR75-B FETAL DOLL (see page 23)
- AR55/AR55-B FETAL DOLL WITH FOUR INTERCHANGEABLE HEADS (see page 26)
- AR35 FEMALE PELVIS (see page 26)
- Lubricant
- Instruction manual



AR57-B

## AR55 FETAL DOLL WITH FOUR INTERCHANGEABLE HEADS, WHITE AR55-B FETAL DOLL WITH FOUR INTERCHANGEABLE HEADS, BLACK

### Features



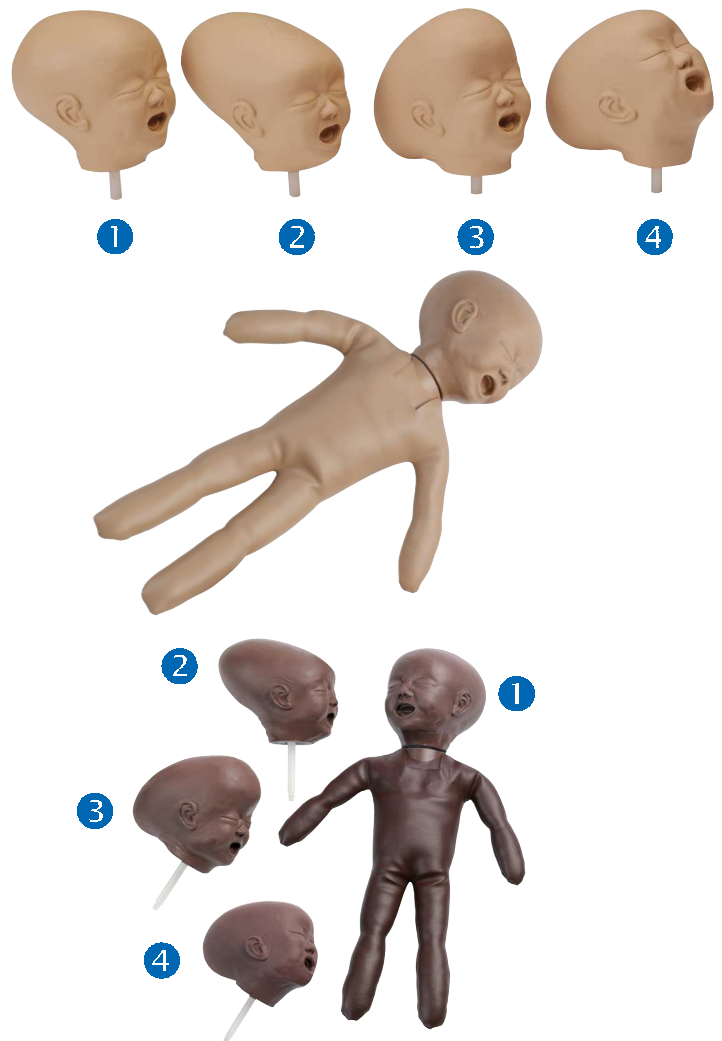
Realistic doll may be used on its own or with our **AR50S OBSTETRIC PHANTOM** or **AR35 FEMALE PELVIS**



Each head has an easy 'click-in' attachment to the doll, which allows 90 degree left and right rotation of the head



- 1 Occipito-posterior
- 2 Occipito-anterior
- 3 Brow
- 4 Face



## AR35 FEMALE PELVIS

### Features

- Cast from life in high quality plastic
- Based on a European natural bone pelvis
- Can be used in conjunction with all our **FETAL DOLLS** to aid visual understanding of different delivery presentations
- With fifth lumbar vertebra
- Flexible coccyx



Adam,Rouilly's Bedford Nurse Training Dolls offer a unique range of features for nurse training. All dolls have soft, pliable skin which can be washed and with continuous skin at elbow and knee joints.

The Dolls are available in:

- Four specifications (see pages 35 - 41 for details)
- White or Black skin tones

## AR1A BASIC FEMALE BEDFORD DOLL, WHITE

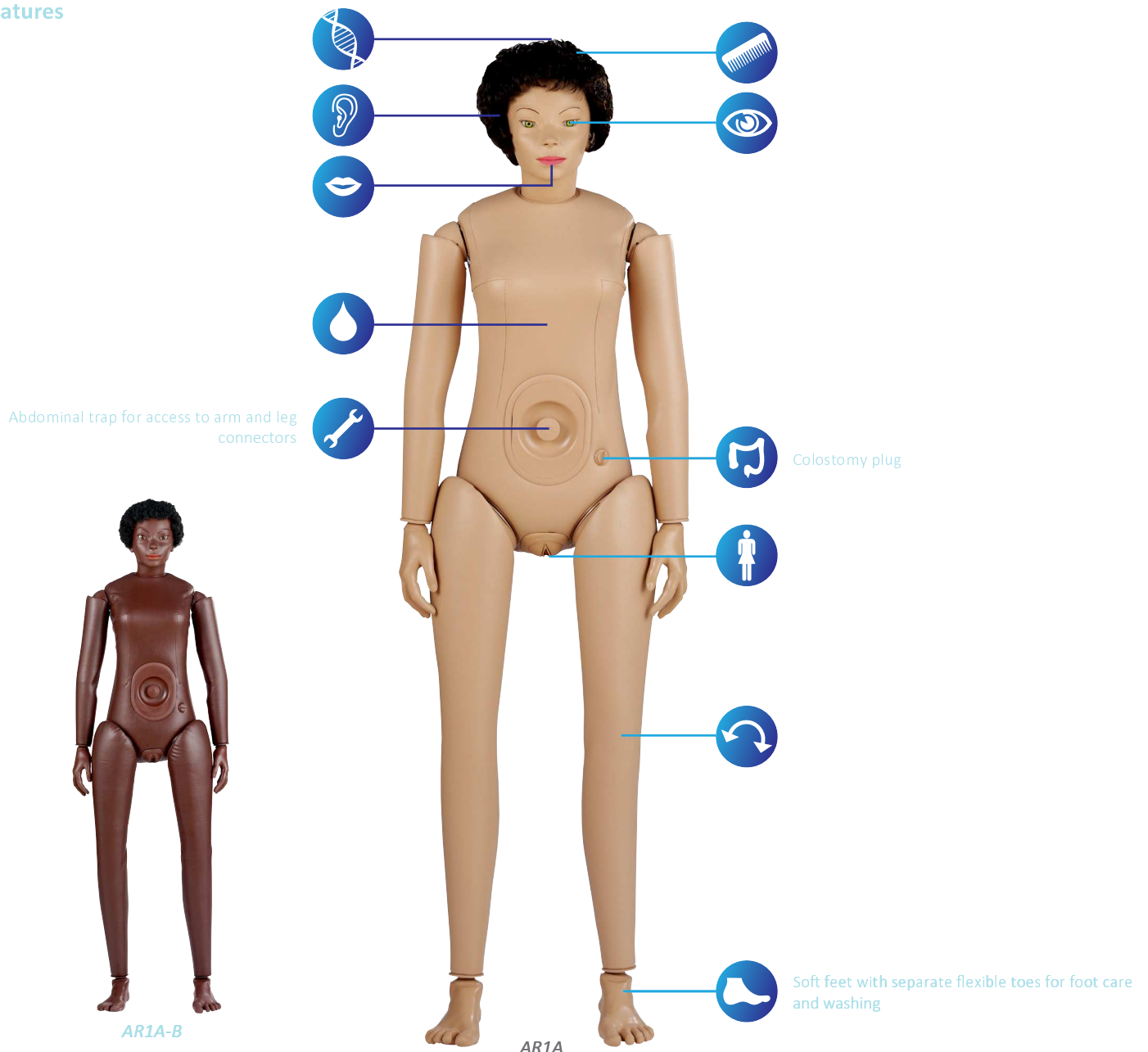
## AR1A-B BASIC FEMALE BEDFORD DOLL, BLACK

The Basic Bedford Doll has been created for students of auxiliary nursing including healthcare workers and nursing assistants and offers a range of realistic, natural features to make training as lifelike as possible.

### Skills

- Bed positioning
- Patient handling
- Bandaging - wet and dry
- Washing
- Colostomy care

### Features



# Nurse Training Dolls

- AR1 STANDARD FEMALE BEDFORD DOLL, WHITE**
- AR1-B STANDARD FEMALE BEDFORD DOLL, BLACK**
- AR2 STANDARD MALE BEDFORD DOLL, WHITE**
- AR2-B STANDARD MALE BEDFORD DOLL, BLACK**

The Standard Bedford Doll is ideal for Basic Nurse Training and includes features for nasogastric feeding and intramuscular injections.

### Skills

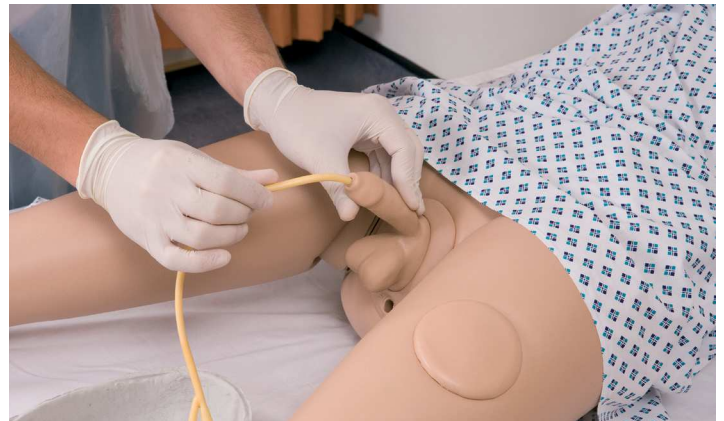
- Bed positioning
- Patient handling
- Aspiration
- Bandaging - wet and dry
- Enema administration
- Intramuscular injections
- Nasogastric feeding
- Stoma care
- Stomach irrigation
- Suprapubic catheterisation
- Tracheostomy - dressing and nursing care
- Urethral catheterisation
- Washing

### Includes

- Interchangeable female and male genitalia **AR1** and **AR1-B**
- Male genitalia only with **AR2** and **AR2-B**
- 16 Fr stomach tube, 18 Fr balloon catheter, 26 Fr rectal tube and instruction manual



*Intramuscular injection*



*Urethral catheterisation*



*Patient care*

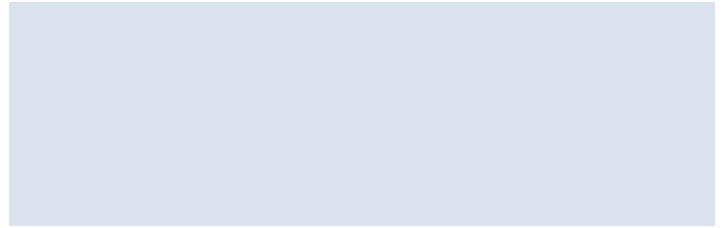
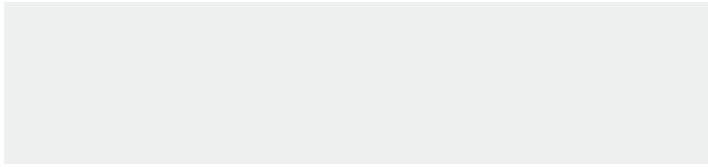


AR1

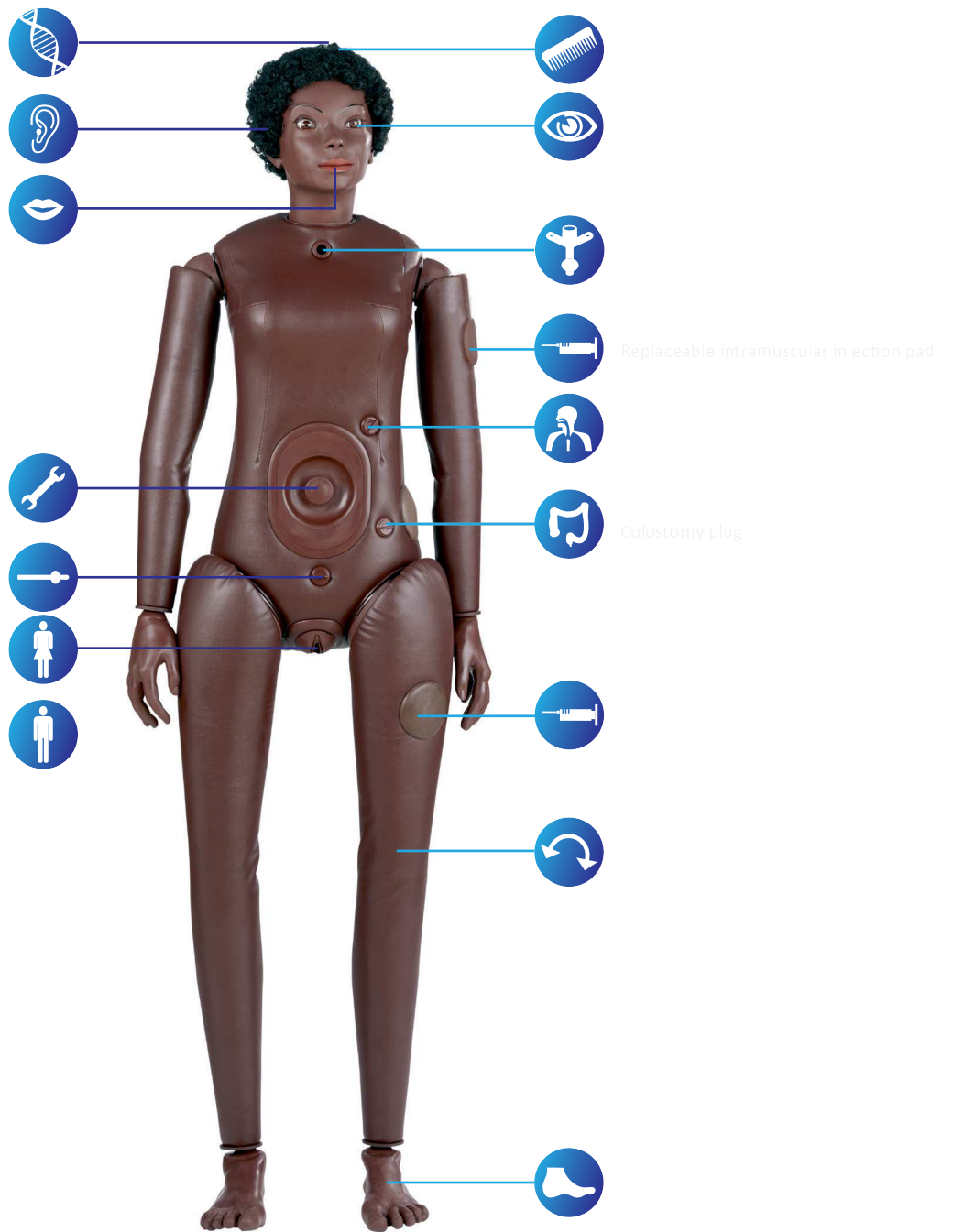
AR1-B

AR2

AR2-B



Features



AR1-B

## Nurse Training Dolls

**AR1000 SUPERIOR FEMALE BEDFORD DOLL, WHITE**

**AR1000-B SUPERIOR FEMALE BEDFORD DOLL, BLACK**

**AR2000 SUPERIOR MALE BEDFORD DOLL, WHITE**

**AR2000-B SUPERIOR MALE BEDFORD DOLL, BLACK**

The Superior Bedford Doll includes the range of features present in the Standard Bedford Doll with the following additional features for added realism in Advanced Nurse Training:

- Articulated waist for greater flexibility
- Moulded colostomy stoma

### Skills

- Bed positioning
- Patient handling
- Aspiration
- Bandaging - wet and dry
- Enema administration
- Intramuscular injections
- Nasogastric feeding
- Stoma care
- Stomach irrigation
- Suprapubic catheterisation
- Tracheostomy - dressing and nursing care
- Urethral catheterisation
- Washing

### Includes

- Interchangeable female and male genitalia **AR1000** and **AR1000-B**
- Male genitalia only with **AR2000** and **AR2000-B**
- 16 Fr stomach tube, 18 Fr balloon catheter, 26 Fr rectal tube and instruction manual.



*Nasogastric feeding*



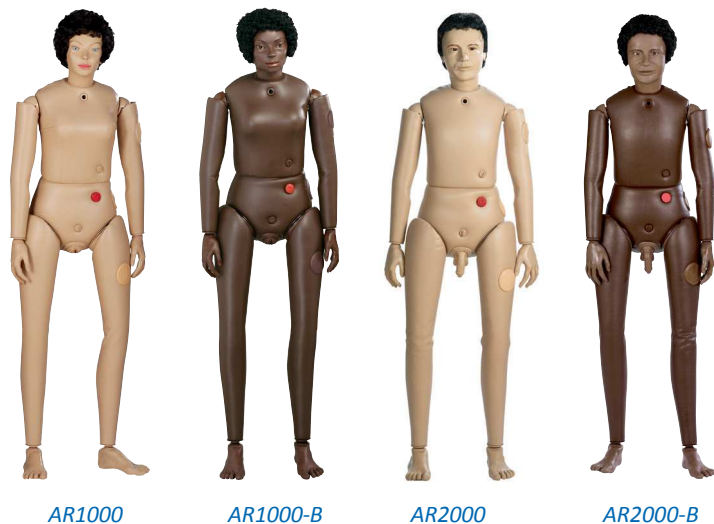
*Intramuscular injection*

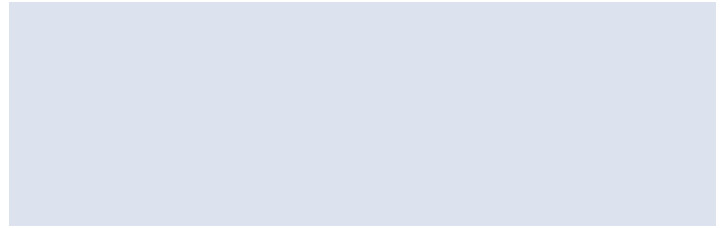
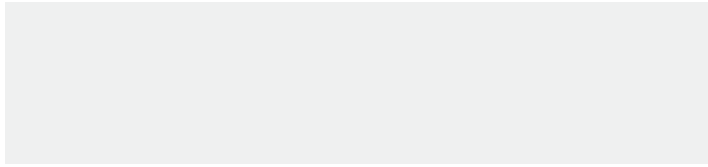


*Tracheostomy care and dressing*

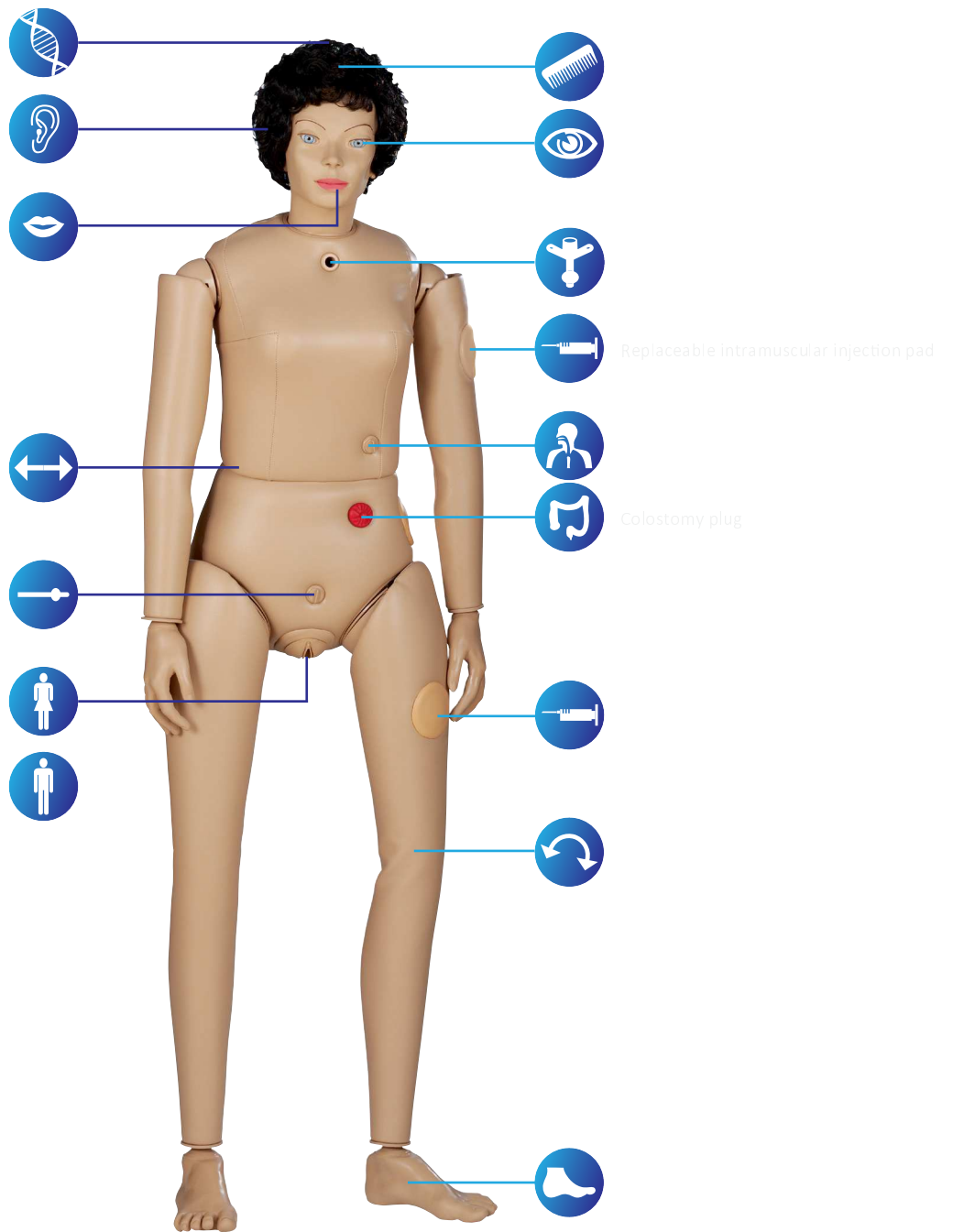


*Patient handling*





Features



AR1000

# Nurse Training Dolls

## AR800 ADVANCED FEMALE BEDFORD DOLL, WHITE AR800-B ADVANCED FEMALE BEDFORD DOLL, BLACK

- The Advanced Bedford Doll offers an extended range of features and the greatest degree of flexibility for added realism in Advanced Nurse Training:
- Articulated waist allows the body to twist, bend forwards and backwards, increasing flexibility
- The body separates at the waist which allows access to the internal reservoirs and the arm and leg connectors
- Click-in shoulder and hip connectors for quick fitting of optional amputation stumps
- Replaceable intramuscular injection pads in both arms
- Replaceable intramuscular injection pad in upper outer quadrant of left buttock
- Replaceable upper thighs for intramuscular injection
- Greater flexibility in the legs

### Skills

- Bed positioning
- Patient handling
- Aspiration
- Bandaging - wet and dry
- Enema administration
- Intramuscular injections
- Nasogastric feeding
- Stoma care
- Stomach irrigation
- Suprapubic catheterisation
- Tracheostomy - dressing and nursing care
- Urethral catheterisation
- Washing

### Includes

- Interchangeable female and male genitalia
- 16 Fr and 20 Fr stomach tubes, 18 Fr balloon catheter, 26 Fr rectal tube and instruction manual



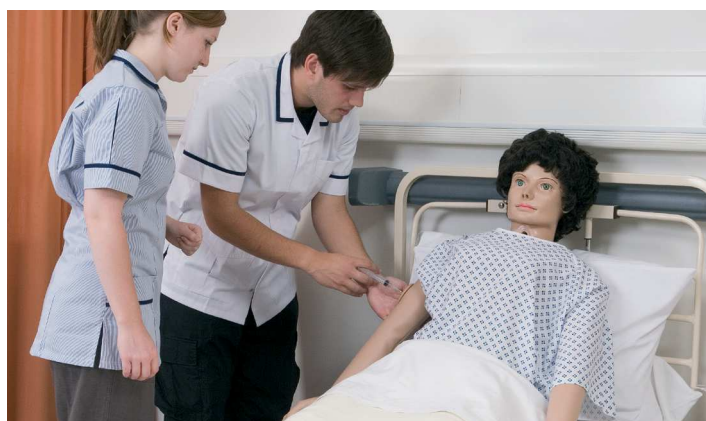
*Intramuscular injection (leg)*



*Urethral catheterisation*



*Nasogastric feeding*



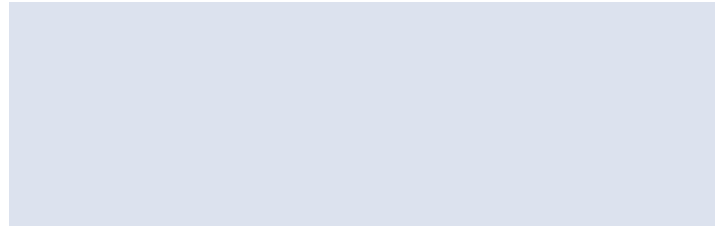
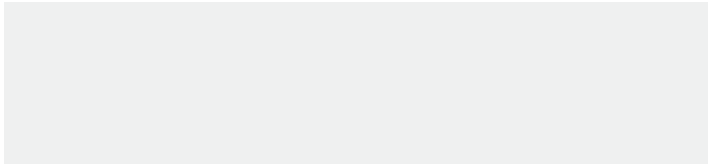
*Intramuscular injection (arm)*



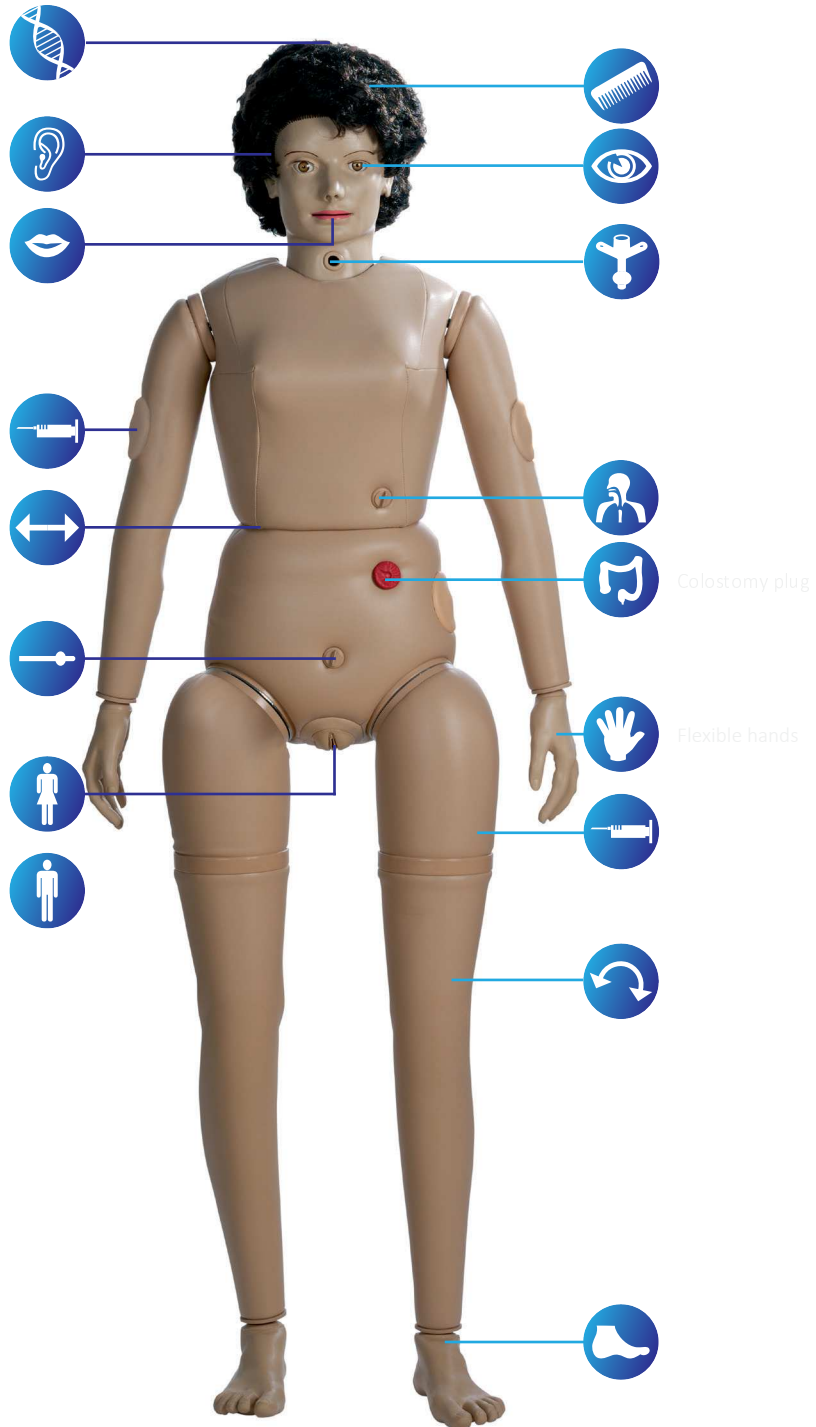
AR800

AR800-B





Features



AR800



An invaluable teaching aid in Schools of Radiography, without bringing discomfort or danger to patients or students.

Widely used by schools of radiography throughout the world.

#### Skills

- Life size human figure for training radiographers in the following skills:
  - Positioning techniques
  - Patient handling
  - X-Ray machine use

#### Features



Life-size figure containing a fully flexible articulated skeleton produced from a specially selected grade of plastic



Weight – the doll is light enough to be carried easily



## Positioning

- The doll may be used in all recumbent positions and will lie naturally in the neutral position, prone or supine
- Use of an upright bucky is possible with supports
- The doll can be positioned for all standard projections. As with many patients in real life scenarios positioning aids such as foam blocks, wedges, sand bags or compression bands should be used

## CT Scanning

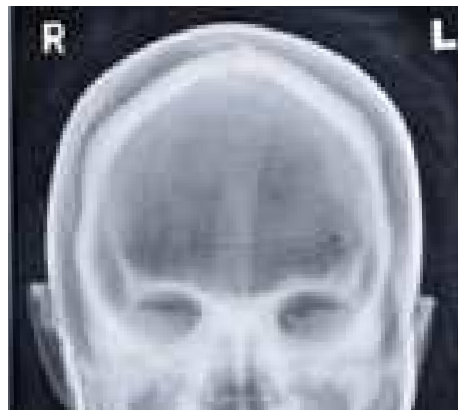
- The X-Ray Positioning Doll can be positioned and imaged for a whole body CT (Computed Tomography) investigation
- Good images in terms of body outline and fundamental structure can be obtained. Certain areas of the skeleton structure e.g. thoracic vertebrae and the head of the femur gave similar values to the typical patient
- As the doll is very different from the human body in terms of attenuation it cannot be used for training in, or practising exposure control

## Individual X-Rays for each Doll

- Each Doll is individually X-rayed and a copy of the images are supplied with the doll
- Customers can be reassured that there are no metal parts in the Doll by referring to the set of digital X-Rays which are supplied with each Doll
- Images shown were taken using medium frequency generator; no grid; fine focus; 100cm S.I.D. Fuji CR system

## Repair Service

Our Sales Department will be happy to advise on the renewal services we offer to considerably extend the life of your X-Ray/Radiographic Positioning Doll.





## AR351 NERVE BLOCK/PAIN RELIEF MANIKIN



The Regional Anaesthesia Simulation Manikin has been designed by a Consultant Anaesthetist at the Manchester and Salford Pain Centre for training anaesthetists in correct needle placement in Nerve Blocks for pain management.

The manikin has now been improved to include a flesh coloured fabric covered torso.

### Skills

- Knowledge of surface anatomy applied to the individual nerve blocks
- Orientation of image and identification of appropriate radiographic landmarks
- Identification point of needle insertion and angle of direction
- Recognition of contact with deep bony structures
- Principle of withdrawing and directing needle to alter the angle
- The end point of simulation is the correct radiographic appearance
- Accurate needle placement is required to guarantee the efficacy of many diagnostic pain clinic blocks and is mandatory when neurolytic solutions are used. Radiological screening to confirm needle placement should be routine and training for this needs to be practical
- Attempts at regional anaesthesia by trainees who are not familiar with the techniques may result in uncomfortable and prolonged procedures for patients

### Features



The manikin consists of a specially coated plastic human skeleton, head covered in artificial skin and flesh coloured fabric covered torso, on which trainees can practice the placement of needles under X-ray image intensifier control

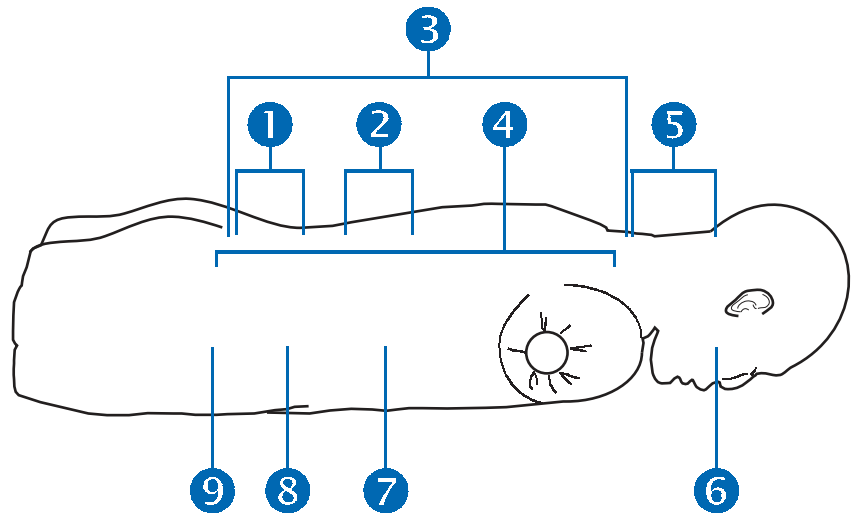


The X-ray density of the manikin is low so that the doses of radiation used during simulated procedures are reduced



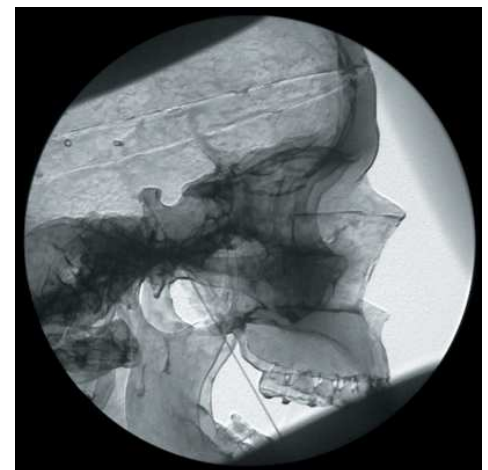
The Manikin can be used to teach the following Nerve Blocks:

- 1 Lumbar sympathetic block
- 2 Splanchnic nerve block
- 3 Epidural injections at all spinal levels
- 4 Cervical, Thoracic and Lumbar facet joint injection and radio frequency denervation of posterior primary ramus
- 5 Cervical facet joint injection
- 6 Trigeminal ganglion block or radio frequency needle placement
- 7 Coeliac nerve block
- 8 Superior hypogastric nerve block
- 9 Sacroiliac joint injection



**Includes**

- A special DVD and leaflet illustrating the use of the manikin
- Rigid carrying case



Photographed at The Pain Management Centre, Hope Hospital, Salford, UK



## Product Support

We have an experienced and knowledgeable sales team who are always pleased to give advice or additional information about our products. Adam,Rouilly prides itself on giving customers personal service.



**Product manuals** and **videos** are also available for many of our products on our website, which can be found under the “Support” tab on individual product pages.

The red “Play” symbol next to products in this catalogue denotes where a product video is available.



## Servicing, Repairs and Spare Parts

We offer a full repair service to considerably extend useful life of many of our products:

We offer a full renovation service for natural bone skeletons. Please contact us for details.

Spare or replacement parts are available for most of our products.



## Product Development

We continually evaluate our range to ensure it is kept in line with the latest advances in clinical practices and procedures.

If you have an idea for a medical teaching product please contact us to discuss your requirements further.



## Exhibitions

We maintain a regular attendance at both UK and international exhibitions.

An up to date list of all the events we will be attending is available on our website.



## Exporting

For more than 90 years we have been exporting to customers throughout the world and have long established relationships with many world famous medical training institutions, nursing colleges, hospitals and universities. We have a very reliable distributor network in many countries.

Please see our website for a full list of distributors or contact us and we will put you in touch with your local Adam,Rouilly agent.

---

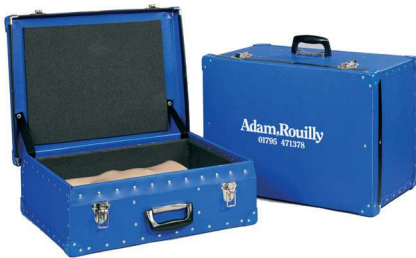
## Clinical Skills Advice

Adam,Rouilly has been involved with the setting up of many Clinical Skills Labs and we are pleased to be able to advise on the products best suited to your requirements.

We believe our clinical skills simulators are competitively priced and we pride ourselves on offering an exemplary customer service. With more than 98 years experience dealing with healthcare professionals, customers can be assured of the best service. All orders are processed and supplied from our modern premises in Sittingbourne.

## Made to Measure Storage/Carrying Cases

To keep your training aids in perfect condition we can supply robust, made-to-measure cases to accommodate many of our simulators or models.



- Polycarbonate construction
- Foam lined
- Reinforced corners
- Security clasps
- Carrying handle

Please specify internal dimensions and we will be happy to prepare a quotation for you.

## Care and Use of Your Models and Simulators

Most of our products are supplied with an instruction manual detailing correct use and care. These manuals have been produced to ensure a long service life - please read these carefully before use and retain for future reference.

In accordance with good clinical practice, it is strongly recommended that surgical gloves are worn when handling models and simulators. This will also reduce soiling and marking.

Equipment used with all our training models should be selected according to local policy guidelines.

Reproduction of any text or illustrations featured in this catalogue is prohibited without the express permission of Adam,Rouilly Limited © 2016.

As part of our policy of continual product development, the specification of products featured in this catalogue may alter from time to time without prior notice.

To demonstrate our commitment to preserving the environment this catalogue is printed on 80% recycled paper and 20% sustainable resources.

E & O E





Alverca Park - Núcleo Empresarial  
Armazém Fracção A · Estrada Nacional 10, Km 126,5  
2615-701 Sobralinho - Alverca do Ribatejo · Portugal  
**Tlf.:** +351 219 598 163  
**[www.marcalab.pt](http://www.marcalab.pt) · [geral@marcalab.pt](mailto:geral@marcalab.pt)**